



ENDER TEKSTİL

COLLECTION  
2023



## HAKKIMIZDA

1969 yılında tekstil sanayisinde kaliteli havlu, bornoz ve ev tekstili ürünlerini sunmak adına Hüseyin GÖK tarafından Uşak'ta kurulmuştur. 1994 yılında Ender GÖK, dünyaca bilinen yüksek kaliteli pamuğun üretildiği Ege Bölgesi' nin Denizli ilinde havlu, bornoz ve ev tekstili üretim ve ihracat faaliyetleriyle şirkete yeni bir yön kazandırmaya başlamıştır.

Ege bölgesinde yetiştirilen en kaliteli pamuklar seçilerek, yüksek kalitede bukile, kadife, pike çeşitleriyle armürlü, jakarlı, nakışlı, baskılı havlu ve bornoz ürün gruplarını üretmek için haşıl çözüğü, dokuma, boyama, kesim, katlama ve paketleme faaliyetlerini yerel pazar ve uluslararası pazar için yürütmektedir.

Şirketin ihracat pazarları Almanya, Fransa, İtalya, Avusturya, İngiltere, İspanya, Slovakya, Slovenya, İsviçre, İsveç, Belçika, Hollanda, Danimarka, Norveç, Finlandiya, Polonya, Amerika, Ukrayna, Rusya, Macaristan, Çek Cumhuriyeti, Yunanistan, Japonya.

## ABOUT US

Founded in 1969 by Mr. Hüseyin GÖK, to be a leader in the textile industry in Uşak. The reorientation of the company started in 1994 by Mr. Ender GÖK in Denizli, known for its world-wide highly quality cotton.

From selecting the best quality cottons cultivated in the region of Denizli to weaving, bleaching, dyeing, cutting, folding and packaging to produce high quality terry and velour (velvet) products for domestic markets and international markets.

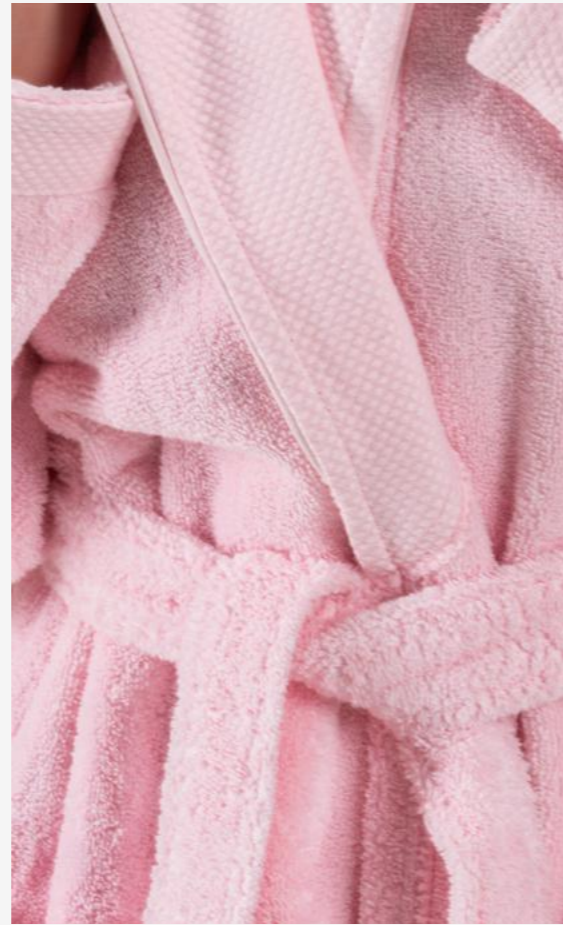
Export markets of the Company include Germany, France, Italy, Austria, England, Spain, Slovakia, Slovenia, Switzerland, Sweden, Belgium, Netherlands, Denmark, Norway, Finland, Poland, America, Ukraine, Russia, Hungary, Czech Republic, Greece, Japan.

**BATHROBE**  
BORNOZ



**END B23-001**

Fabric Type	: 100% Polyester Welsoft Grown
Pile Yarn	: -
Model	: Shawl Colar
GSM	: 300 gr/m <sup>2</sup>
Weaving Type	: Dobby
Dyeing Type	: Plain Dyed



**END B23-002**

Fabric Type	: %100 Turkish Microcotton Terry Bathrobe
Pile Yarn	: 16/1
Model	: Shawl Collar
GSM	: 420 gr/m <sup>2</sup>
Weaving Type	: Dobby
Dyeing Type	: Plain Dyed



**END B23-003**

Fabric Type	: 100% Turkish Cotton Terry Bathrobe
Pile Yarn	: 16/1
Model	: Shawl Collar
GSM	: 400 gr/m <sup>2</sup>
Weaving Type	: Dobby
Dyeing Type	: Plain Dyed



**END B23-004**

Fabric Type	: 100% Turkish Cotton Terry Bathrobe
Pile Yarn	: 16/1
Model	: Shawl Collar
GSM	: 400 gr/m <sup>2</sup>
Weaving Type	: Dobby
Dyeing Type	: Plain Dyed



**END B23-005**

Fabric Type	: 100% Turkish Cotton Waffle Bathrobe
Pile Yarn	: 16/1
Model	: Kimono
GSM	: 210 gr/m <sup>2</sup>
Weaving Type	: Jacquard
Dyeing Type	: Yarn Dyed



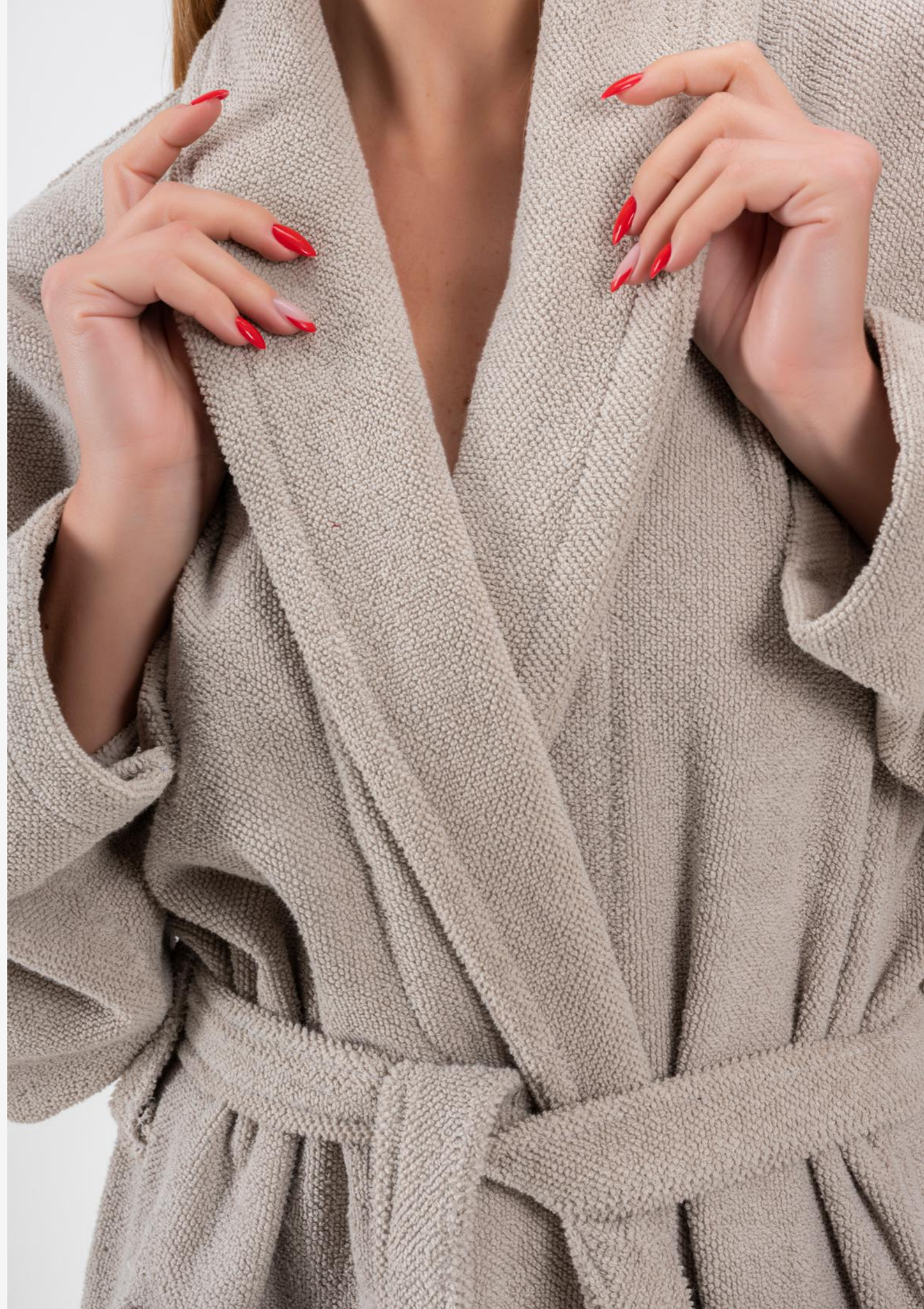
**END B23-006**

Fabric Type	: Bamboo Terry Bathrobe
Pile Yarn	: 16/1
Model	: Shawl Collar
GSM	: 450 gr/m <sup>2</sup>
Weaving Type	: Dobby
Dyeing Type	: Plain Dyed



**END B23-007**

Fabric Type	: 100% Turkish Cotton Velour Bathrobe
Pile Yarn	: 16/1
Model	: Hooded
GSM	: 380 gr/m <sup>2</sup>
Weaving Type	: Jacquard
Dyeing Type	: Yarn Dyed



**END B23-008**

Fabric Type	: 100% Turkish Cotton Terry Bathrobe
Pile Yarn	: 20/2
Model	: Shawl Collar
GSM	: 450 gr/m <sup>2</sup>
Weaving Type	: Dobby
Dyeing Type	: Plain Dyed



**END B23-009**

Fabric Type	: 100% Turkish Cotton Terry Bathrobe
Pile Yarn	: 20/2
Model	: Shawl Collar
GSM	: 420 gr/m <sup>2</sup>
Weaving Type	: High - Low Pile Jacquard
Dyeing Type	: Plain Dyed



**END B23-010**

Fabric Type	: 100% Turkish Microcotton Terry Bathrobe
Pile Yarn	: 16/1
Model	: Shawl Collar
GSM	: 450 gr/m <sup>2</sup>
Weaving Type	: Dobby
Dyeing Type	: Plain Dyed



**END B23-011**

Fabric Type	: 100% Turkish Cotton Terry Bathrobe
Pile Yarn	: 16/1
Model	: Shawl Collar
GSM	: 400 gr/m <sup>2</sup>
Weaving Type	: Dobby
Dyeing Type	: Plain Dyed



**END B23-013**

Fabric Type	: 100% Turkish Organic Cotton Terry Bathrobe
Pile Yarn	: 16/1
Model	: Shawl Collar With Piping
GSM	: 450 gr/m <sup>2</sup>
Weaving Type	: Dobby
Dyeing Type	: Plain Dyed



**END B23-014**

Fabric Type	: 100% Turkish Organic Cotton Terry Bathrobe
Pile Yarn	: 16/1
Model	: Shawl Collar
GSM	: 360 gr/m <sup>2</sup>
Weaving Type	: Dobby
Dyeing Type	: Plain Dyed



**END B23-015**

Fabric Type	: 50% Cotton 50% Polyester Dreamsoft Bathrobe
Pile Yarn	: 16/1
Model	: Kimono
GSM	: 350 gr/m <sup>2</sup>
Weaving Type	: Dobby
Dyeing Type	: Plain Dyed



**END B23-016**

Fabric Type	: 100% Turkish Cotton Velour Bathrobe
Pile Yarn	: 16/1
Model	: Shawl Collar
GSM	: 360 gr/m <sup>2</sup>
Weaving Type	: Dobby
Dyeing Type	: Plain Dyed



## END B23-017

Fabric Type : Microcotton Terry Bathrobe

Pile Yarn : 16/1

Model : Shawl Collar

GSM : 460 gr/m<sup>2</sup>

Weaving Type : Dobby

Dyeing Type : Plain Dyed



**END B23-018**

Fabric Type	: 100% Turkish Cotton Velour Bathrobe
Pile Yarn	: 16/1
Model	: Shawl Collar
GSM	: 380 gr/m <sup>2</sup>
Weaving Type	: Jacquard
Dyeing Type	: Plain Dyed



**END B23-019**

Fabric Type	: 100% Turkish Cotton Terry Bathrobe
Pile Yarn	: 16/1
Model	: Shawl Collar
GSM	: 460 gr/m <sup>2</sup>
Weaving Type	: Dobby
Dyeing Type	: Plain Dyed



## END B23-020

Fabric Type	: 100% Turkish Microcotton Terry Bathrobe
Pile Yarn	: 16/1
Model	: Shawl Collar With Piping
GSM	: 460 gr/m <sup>2</sup>
Weaving Type	: Dobby
Dyeing Type	: Plain Dyed





## END B23-021

Fabric Type	: 100% Turkish Cotton Terry Bathrobe
Pile Yarn	: 16/1
Model	: Shawl Collar
GSM	: 400 gr/m <sup>2</sup>
Weaving Type	: Jacquard
Dyeing Type	: Plain Dyed

**Ender**  
TEKSTİL

# Crafted in Denizli, Trusted Worldwide

**Since 1969, weaving quality  
& comfort into every thread**

- \* BSCI & OEKO-TEX Certified
- \* Private Label & Custom Design
- \* Fast Lead Times, Scalable Production
- \* Sustainable Collections Available

[www.endertekstil.com](http://www.endertekstil.com)

PLEASE SCAN  
QR CODE



Advancing with **Quality,**  
**Nature, and Responsibility!**

Guaranteed safe and sustainable production  
with our certifications.



**Sedex**



STANDARD  
100

**amfori**  
Trade with purpose  
**BSCI**





# ENDER

TEKSTİL SAN. ve TİC. LTD. ŞTİ.

Pınarkent Mh. Cafer Sadık Abalođlu Blv.

No: 33 P.K. 20170

Pamukkale / DENİZLİ - TÜRKİYE

Phone: +90 258 286 52 48 Fax: +90 258 286 54 41

info@endertekstil.com | www.endertekstil.com